

Intelligent Profibus Servo Drive

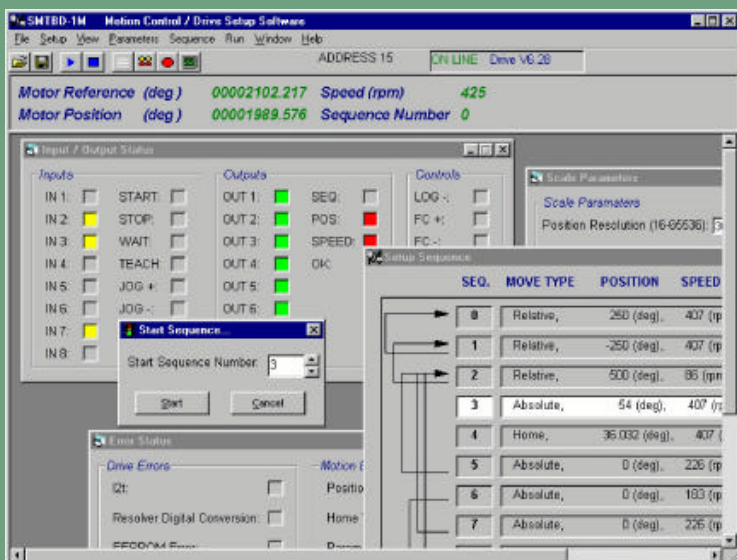
SMTBD-P Data File

Summary

Infranor's Profibus servo drive is designed to drive AC brushless servo motors in conjunction with any PLC or host controller using the Profibus DP protocol.

Local intelligence within the drive is used to generate motion profiles and provide closed loop control, thereby reducing the level of fieldbus communication. System set-up and commissioning are simplified using autophasing of the motor and autotuning of the closed loop servo.

Windows® based software is used to configure the drive and to program up to 128 downloadable and storable motion profiles. This reduces the PLC programming task to simple commands.



Features

- * Digital servo drive capable of 128 programmable motion sequences.
- * Trapezoidal or 'S' curve profiles selectable for smoother motion control.
- * Closed loop motion control performance independent from bus cycle time and PLC resources
- * 'Plug and play' integration by GSD file for Profibus 'DP'.
- * Configurable digital IO
- * Set-up and sequencing directly from the PLC using IEC 1131-3 programming tools, or via RS 232 link using Windows based programming software.
- * Available in single axis or multi axes racks, with current ratings from 2 to 35 amps continuous, 4.4 to 100 amps peak.



Amplifier Specifications

- * Encoder position output up to 8,192ppr.
- * Closed loop sample rate: 2 kHz.
- * Logic outputs: Enable/disable; Unidirectional limit switches.
- * Logic Inputs: Indexing; Fault reset; Automatic Brake Control.
- * 8 user defined Inputs and 8 Outputs.
- * Relay outputs: Amp ready; Power ready.
- * Diagnostics by serial link, Profibus or front panel LEDs.
- * Automatic amplifier adjustment to motor (Autophasing).
- * Automatic Regulator tuning (Autotuning).
- * Rack size: 6U.
- * Power supply: 220 volts single phase or 400 volts three phase.

Suitable Motors

- * Suitable motors include the square frame BLS series servo motors and "flat" style MA series servo motors from Infranor-Mavilor, ranging from the 0.3Nm torque, 40mm frame BLS 40 to the 70Nm torque, 190mm frame BLS 190.

For further details please contact Infranor Ltd at:

Northern Office

PO box 87,
Harrogate,
North Yorkshire.
HG2 8UT
Tel 01423 874777.

Southern Office

Unit C,
Foundry Close,
Horsham,
West Sussex
RH13 5TX.
Tel 01403 223500

Midland Office,

Unit 11, Park Farm Business Centre,
Fornham St. Genevieve,
Bury St Edmunds,
Suffolk,
IP28 6TS
Tel 01284 702570.