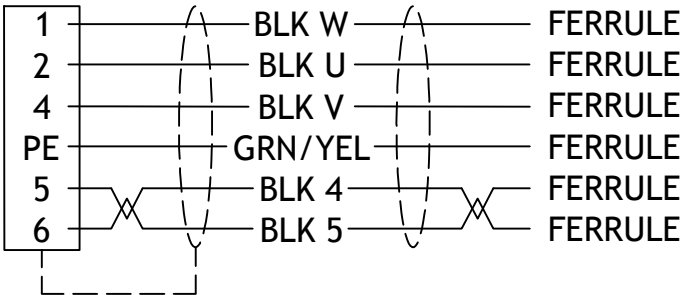
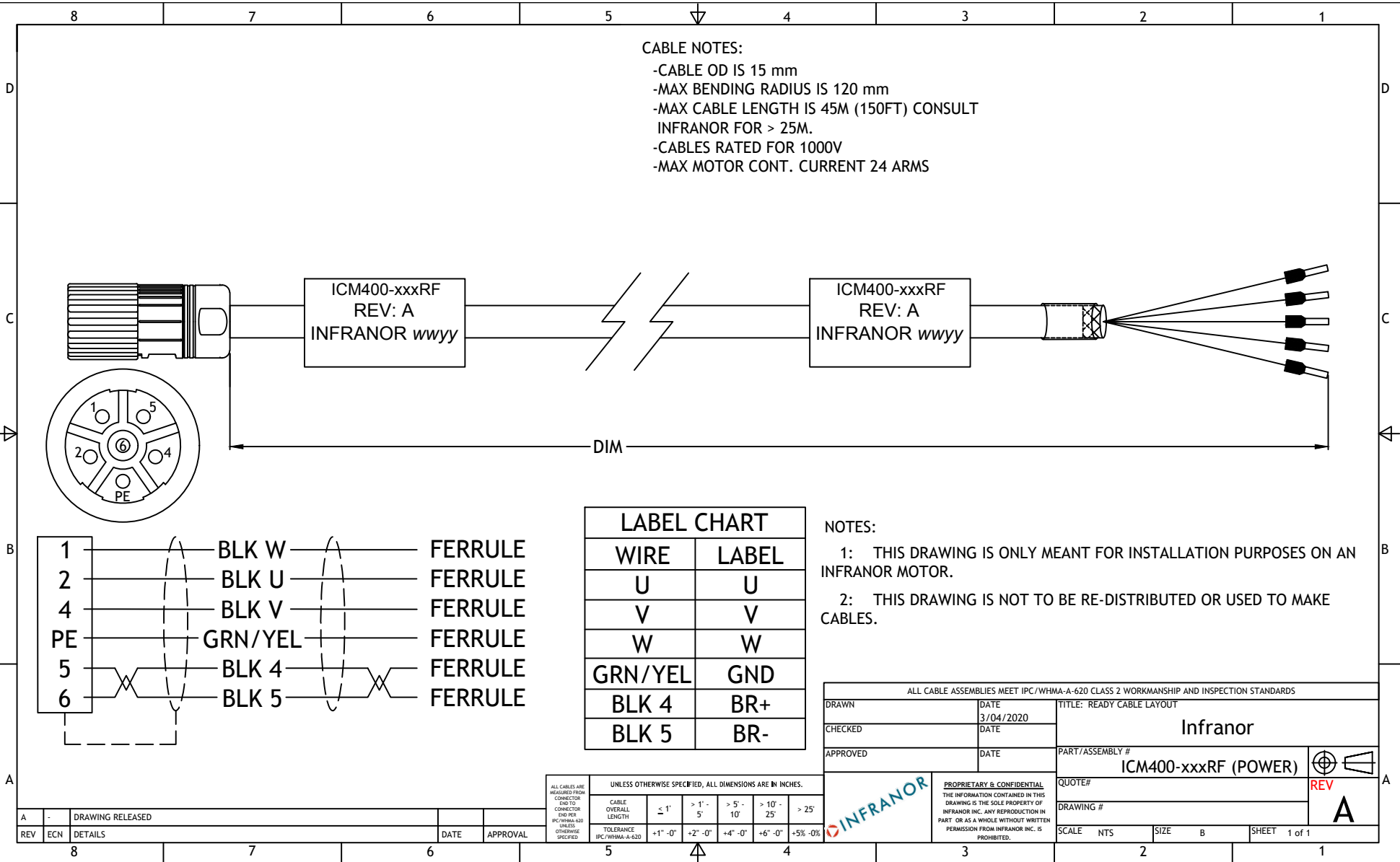


**CABLE NOTES:**

- CABLE OD IS 15 mm
- MAX BENDING RADIUS IS 120 mm
- MAX CABLE LENGTH IS 45M (150FT) CONSULT INFRANOR FOR > 25M.
- CABLES RATED FOR 1000V
- MAX MOTOR CONT. CURRENT 24 ARMS



LABEL CHART	
WIRE	LABEL
U	U
V	V
W	W
GRN/YEL	GND
BLK 4	BR+
BLK 5	BR-

**NOTES:**

- 1: THIS DRAWING IS ONLY MEANT FOR INSTALLATION PURPOSES ON AN INFRANOR MOTOR.
- 2: THIS DRAWING IS NOT TO BE RE-DISTRIBUTED OR USED TO MAKE CABLES.

ALL CABLE ASSEMBLIES MEET IPC/WHMA-A-620 CLASS 2 WORKMANSHIP AND INSPECTION STANDARDS			
DRAWN	DATE 3/04/2020	TITLE: READY CABLE LAYOUT	
CHECKED	DATE	<div style="text-align: center; font-size: 24px; font-weight: bold;">Infranor</div>	
APPROVED	DATE		
PART/ASSEMBLY # ICM400-xxxRF (POWER)			
QUOTE#			
DRAWING #		REV <b>A</b>	
SCALE	NTS	SIZE	B
SHEET		1 of 1	

ALL CABLES ARE ACQUIRED FROM CONNECTOR END TO CONNECTOR END PER IPC/WHMA-A-620 UNLESS OTHERWISE SPECIFIED	UNLESS OTHERWISE SPECIFIED, ALL DIMENSIONS ARE IN INCHES.					
	CABLE OVERALL LENGTH	< 1'	> 1' - 5'	> 5' - 10'	> 10' - 25'	> 25'
	TOLERANCE IPC/WHMA-A-620	+1" -0"	+2" -0"	+4" -0"	+6" -0"	+5% -0%

A	-	DRAWING RELEASED			
REV	ECN	DETAILS	DATE	APPROVAL	



**PROPRIETARY & CONFIDENTIAL**  
THE INFORMATION CONTAINED IN THIS DRAWING IS THE SOLE PROPERTY OF INFRANOR INC. ANY REPRODUCTION IN PART OR AS A WHOLE WITHOUT WRITTEN PERMISSION FROM INFRANOR INC. IS PROHIBITED.